

# CHAMOT

## Recombinant Human CCL2

CM128-5HP  
CM128-20HP  
CM128-100HP  
CM128-500HP  
CM128-1000HP



CHAMOT

喬默生物技術(上海)有限公司  
CHAMOT BIOTECHNOLOGY CO., LTD.

# CONTENT

**1** 产品简介

**2** 产品组成

**3** 产品储存

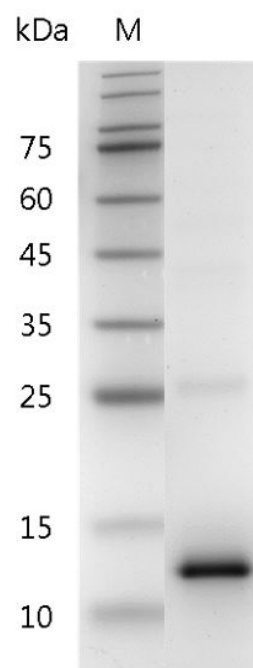
**4** 产品使用

## Recombinant Human CCL2 (C-C motif chemokine ligand 2)

|     |   |     |   |
|-----|---|-----|---|
| 编号: | CM128-5HP<br>CM128-20HP<br>CM128-100HP<br>CM128-500HP<br>CM128-1000HP | 规格: | 5 µg<br>20 µg<br>100 µg<br>500 µg<br>1 mg |
| 类别: | 重组蛋白  | 应用: | Functional Assay                          |

### 产品简介

|        |  |
|--------|--|
| 描述:    | <p>CCL2, also known as MCP-1, is belonging to the CC β chemokine family. CCL2 can be identified in endothelial cells, smooth muscle cells and monocytes as the results of reaction to several atherogenic stimulants, such as CD40 ligand, (IL-1 ) and oxidized low density lipoprotein , interleukin-1 platelet derived growth factor (PDGF). Recent study shows that in vivo MCP1 have several critical roles in atherosclerosis. Additionally, MCP-1 has been proved involving in monocytic infiltration of tissues during several inflammatory diseases, and has been implicated in macrophage-mediated tumor growth inhibition in mice. In addition, CCL2 has been shown to have direct effects on tumor cells in an autocrine and paracrine fashion in multiple cancers, including sarcoma, lung, cervix, ovary, breast, and prostate.</p> |
| 来源:    | <i>Escherichia coli</i>  |
| 纯度:    | >95% as determined by SDS-PAGE.  |
| 生物学活性: | Measure by its ability to chemoattract human THP1 cells using a concentration range of 10-50 ng/mL.  |



SDS- PAGE analysis of recombinant human CCL2

内毒素检测: < 0.1 EU per 1 µg of the protein by the LAL method.

蛋白序列: QPDAINAPVTCCYNFTNRKISVQRLA  
SYRRITSSKCPKEAVIFKTIVAKEICADP  
KQKWVQDSMDHLDKQTQTPKT  
with polyhistidine tag at the N-terminus

## 产品组成

成分: 从含有 1X PBS, pH 7.4 溶液中冻干的蛋白质.

## 产品储存/运输

| 产品形式      | 储存温度        | 储存时间     |
|-----------|-------------|----------|
| 冻干粉       | -20°C至-80°C | 自收到之日起1年 |
| 重悬液 (初始)  | 2°C至8°C     | 不超过1周    |
| 重悬液 (经稀释) | -20°C至-80°C | 3到6个月    |

运输方式: 蓝冰

## 产品使用

- 1、开盖前，建议3000-3500rpm离心5min。
- 2、推荐使用无菌水重悬冻干粉，溶液浓度不低于100µg/mL，不高于1mg/mL，并室温静置至少20min以充分溶解。勿涡旋剧烈振荡。
- 3、重悬后的溶液，2 -8°C无菌保存不超过1周。
- 4、如需长期保存，推荐使用无菌的含载体蛋白（如0.1 % BSA、10 % FBS 或5 % HSA）的溶液进一步稀释（不低于10ug/mL）后分装保存，-20°C至 -80°C无菌保存3到6个月。无血清实验需求时，可更换为 5 %海藻糖溶液作为载体。避免反复冻融。

WB= Western Blot; IP= Immunoprecipitation; IF= Immunofluorescence; IHC= Immunohistochemistry;  
FACS= Fluorescence activated Cell Sorting; FA= Functional Assay